



Essendon

C of E Primary School

Encouraging everyone's light to shine

www.essendon.herts.sch.uk

01707 261209

admin@essendon.herts.sch.uk

Newsletter: 20th November 2020

Dear Essendon families ...

As Christmas comes ever closer, I hope you and your family are able to make the most of this advent season, despite the ever-changing landscape of lockdowns and self-isolation. Here are the key messages for you this week...

Staff changes from January

From January, there will be a few changes to our staffing. We are delighted to announce that Mrs Pulham will be increasing her hours to three days-a-week in Harefield class, and that Mrs Jones will be increasing her time in Homewood to include Thursdays and Fridays, supported by Mrs Boswell, Mrs Richmond and Mrs Hursey. Meanwhile Mrs Foster will be moving her two days-a-week from Homewood to Harefield. After stepping up to take on Harefield class when Miss Archer left the school at the beginning of lockdown in April, Miss Da Costa has made the decision to step down from this role to return to providing private tuition and supply teaching, and we are pleased that she will remain part of the Essendon family in this capacity.

Zones of Regulation

This half term we have been learning how to use The Zones of Regulation, a strategy to encourage

This half term, our value is:

The Essendon Way

the development of self-regulation and emotional control. Self-regulation is something everyone continually works on whether they realise it or not. All of us come across circumstances that test our limits from time to time. If we can recognise when we are becoming less regulated, then we are able to do something about it to manage our feelings.

This comes quite naturally to some, but for others it is a skill that needs to be taught and then practised. The Zones of Regulation places our feelings into four coloured zones. It provides strategies to teach children how to become more aware of, and independent in, controlling their behaviour. Children learn to identify their feelings, understand how their behaviour impacts others, and learn how to move from one Zone of feelings to another.

In the Green Zone you are 'good to go'. The Yellow Zone means 'be aware you are getting fizzy'. Red means 'stop and find your calm place'. Blue means 'you need to re-energise'. Everyone will experience all of the zones at some time. We are working with the children to identify our 'toolbox' of strategies to recognise what Zone we are in and understand how we can move back to Green, 'good to go'. For more information, go to <https://www.zonesofregulation.com/learn-more-about-the-zones.html>

Raffle draw

The draw for the Christmas raffle will take place next Tuesday. The draw will be sent out on video by email.

With love and best wishes, Mr Potter

Spring term after-school clubs from Multi-Active

Multi-Active have announced the following line-up of after-school clubs and activities for the spring term. Once again, the school will pay 50% of the cost for any child who wishes to attend.

Monday – Multi-Sports – 3:15-4:15
Tuesday – Nerf Targets Club – 3:15-4:15
Wednesday – Football Club – 3:15-4:15
Thursday – Gymnastics Club – 3:15-4:15
Friday – Street Dance Club – 3:15-4:15

Care Club, including Snack, Mon – Friday
4:15pm - 6pm

CALLING EVERYONE!!!


V O L U N T E E

WHAT'S MISSING?

U R


**Parents, Teachers & Community Working Together
to Benefit the Education of OUR Children.**


Essendon Village CoFE School are setting up a new Friends of Essendon School Fundraising Charity – there are so many reasons why being part of the FES can benefit your child, school and community so please come & join our committee!



Please contact us on FES61120@outlook.com or Mr Potter if you would like to be part of the new & exciting FES Committee.

AGM to be held 14.12.2020 3.15pm – details to follow

 Friends of Essendon School
Every Child. One Voice

 Parentkind
Member Association

Venues in Beds, Cambs, Herts & Essex

All Venues have safe Covid-19
measures in place.
More information on website.



Activities Include:
Arts and Crafts
Archery
Circus Skills
Multi-Sports
Nerf Wars
Puzzle challenges
Performing Arts
Team Games

£19.99 per day
(Sibling discount 10%)



Courses run 9-4pm
All venues offer extended hours: 8am-5.30pm
Biggleswade extended hours: 7.30am-6pm

HOW TO BOOK:
WWW.MULTI-ACTIVE.CO.UK
TEL:07561-416208 OR 01462-351582





Christmas Treeasy

Dear Parent,

With Christmas fast approaching its time to inform you of our fantastic Covid secure Christmas tree fund raising scheme that Christmas Treeasy are able to offer through your school this year.

For every tree sold through your school, to both staff and parents, your relatives, friends and work colleagues, we will donate the sum of between £3 and £5 (size of tree dependant) to your school fund by the start of the end of the Christmas term.

Christmas Treeasy specialise in only the very best top-grade trees available, the non-drop Nordmann Fir Christmas tree, which we deliver free of charge direct to your home. For a small additional fee there is also the option of recycling, whereby we collect and recycle trees in the New Year. For all your tree needs we also supply tree stands and bags of logs too!

This year we have eleven dates available for delivery (more dates may become available) and great trees are of short supply, so please order early to avoid disappointment.

HOW TO ORDER

1. Online at www.christmastreeasy.co.uk where we can take credit card payments, please choose your school from the drop-down list.
2. By phone, calling [07710 407149](tel:07710407149) or [07989 072090](tel:07989072090)
3. By direct email at enquiries@christmastreeasy.co.uk this year's order form is attached.

You can also follow us and your delivery on Facebook at: www.facebook.com/christmastreeasy and on Twitter: [@XmasTreeasy](https://twitter.com/XmasTreeasy)

Please make sure you mention your school in all correspondence to ensure a donation to your school.

'WIN' a full refund on your order, it has worked so well the last few years so we're keeping the offer for this Christmas. Tell your friends about us and if they purchase a tree, make sure that they inform us, via the order page online, of your recommendation and the winner will be the person who supplies the most recommendations; they will be notified and fully refunded before Christmas. Good luck!

I look forward seeing many of you soon.


Yours faithfully

A handwritten signature in black ink, appearing to read 'Dean Turner'.


Dean Turner
Christmas Treeasy Ltd.



 PREMIUM GRADE NORDMANN FIR	SIZE OF TREE	PRICE PER TREE	QTY ORDERED
	4ft to 4'8"	£35.00	
	4'8" to 5'6"	£40.00	
	5'6" to 6'4"	£46.00	
	6'4" to 7'2"	£55.00	
	7'2" to 8ft	£62.00	

 CINCO STAND	SIZE OF STAND	PRICE PER STAND	QTY ORDERED
	SMALL	£15.00	
	MEDIUM	£18.00	
	LARGE	£23.00	

	SIZE OF BAG	PRICE PER BAG	QTY ORDERED
	5KG BAG OF XMAS LOGS	£4.00	
	10KG BAG OF XMAS LOGS	£7.00	

	RECYCLING OF XMAS TREE	£6.50	
---	------------------------	-------	--

Recycling of Christmas trees will take place between 7th & 10th January. Please leave your tree outside your door ready for collection.

CHRISTMAS DELIVERY DATES	30 th Nov	1 st Dec	4 th Dec	5 th Dec	6 th Dec	8 th Dec	11 th Dec	12 th Dec	13 th Dec	15 th Dec	17 th Dec
-----------------------------	-------------------------	------------------------	------------------------	------------------------	------------------------	------------------------	-------------------------	-------------------------	-------------------------	-------------------------	-------------------------

More delivery dates may be added due to demand, deliveries start early on the specified days, trees will be left in a safe place if you're out

Here's how to place an order

1. Go to the order a delivery page online at: www.christmastreeeasy.co.uk
2. Choose your size of tree
3. Add your school from the drop-down box
4. Choose your preferred delivery date from options
5. Add Recycling, a Stand or Christmas logs to your order if you wish

Contact us for more information by Email: enquiries@christmastreeeasy.co.uk

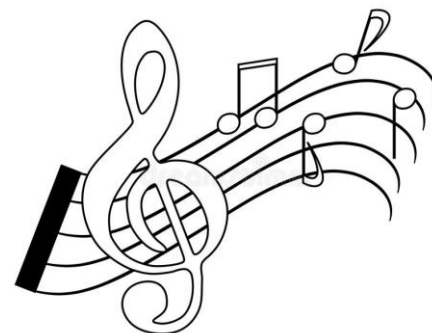
Phone: 07710 407149 or 07989 072090

Facebook: www.facebook.com/christmastreeeasy Twitter: [@XmasTreeeasy](https://twitter.com/XmasTreeeasy)



Cash & cheques may be payable upon delivery, call or email us for details. Please make cheques payable to Christmas Treeeasy Ltd; please write your details on the back. Credit card payments can be made online only.

TAKE UP MUSIC!



Dear Parent / Guardian / Carer

Musical Instrument tuition is coming back to Essendon Primary!

The scheme will be available for Piano/Keyboard, Guitar and Ukulele.

Whichever you choose, the lessons are all designed to offer high quality tuition, keeping each session enjoyable and interesting - using the very best in tuition books and courses.

Everyone has the potential to play a musical instrument and as with any learning process we all progress and develop in different ways - from technical expertise to a more creative style, or somewhere in between!

After an initial period of getting to know the instrument, musical activities such as ensembles and performance in assemblies are encouraged for students.

Please find below details of schemes and costs - then contact us with your preference at shampshire32@gmail.com and we will reply to your enquiry as soon as possible.

Lesson requests will be dealt with promptly and your child can start learning to play!

<i>Tuition scheme</i>	<i>Individual</i>	<i>Paired</i>	<i>Cost per session ind /paired £'s</i>
• PIANO	Yes	*	6.50
• KEYBOARD	Yes	*	6.50
• GUITAR	Yes	Yes	6.50 / 3.25
• UKULELE - *NEW*	Yes	Yes	6.50 / 3.25
• SINGLE STUDENT "MAXI SESSION"	Yes	*	10.00

All standard lessons have a duration of 20 minutes / MAXI SESSIONS - 30 minutes

Other Information -

- Advice and recommendations for purchasing instruments can be given.
- **Invoices will be sent with payment instructions once reply forms are received**
- Tuition Fees are requested in advance for each Half Term period
- Fees are calculated subject to school curriculum activities

COVID - 19 : ALL MUSIC LESSONS WILL TAKE PLACE IN ACCORDANCE WITH SCHOOL REGULATIONS & RESTRICTIONS/REQUIREMENTS AND ARE SUBJECT TO CHANGE. MUSIC LESSON TIMETABLES WILL BE ORGANISED AND/OR ADJUSTED TO ALLOW SAFE COLLECTION AND RETURN OF PUPILS TO THEIR CLASSROOMS.

Teacher : Simon Hampshire Mobile : 07473 173448 Email : shampshire32@gmail.com

Awards

Congratulations to everyone who has earned an award with their hard work and beautiful manners this week!



Headteacher's awards this week go to Charlie B, Jess, Archie and Ishen.

Bronze Team Points awards this week go to Rowan, Lana, Liam, Ruben, Edward, Bramley, Holly.

Very well done to you all!

Governor quote

Despite another week beset with ups and downs, it was really good for the Pupils and Curriculum governors to be able to spend an afternoon immersed in music as we did a 'deep dive' into this area of the curriculum.

It was interesting to see what a wonderfully resourced teaching programme looks like with great activities for all ages to be able to explore the diversity of music on lots of different levels.

There were some challenging questions, focussing on what has been able to be taught during this time of covid restrictions, but it was great to know how creative staff and children can be as they endeavour to implement the Essendon curriculum in all areas of learning.

Sincerely,
Katie Bedi,
School Governor

Congratulations to this week's star learners!

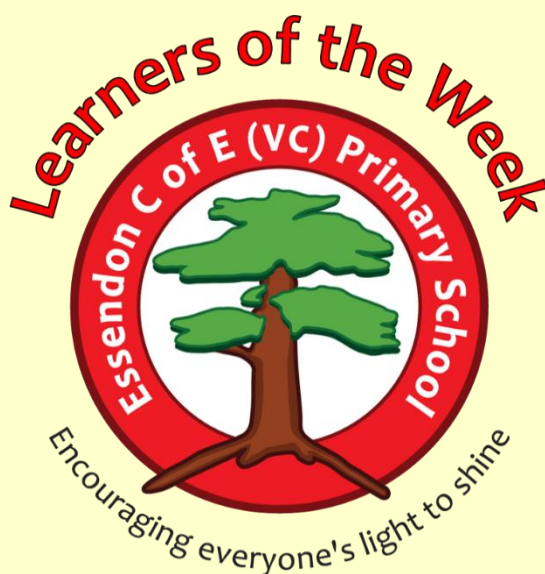
Pantherswood:
Evelyn-Rose and
Joshua

Homewood:
Charlotte and
Rowan

Warrenwood:
William and
Evie

Harefield:
Erin and Daniel

Well done to you all! Your cut-out-and-keep Learner of the Week leaves are below.



Term dates 2020-2021

Autumn Term

Weds 2nd Sep: Inset Day
Thurs 3 Sep: Term Begins
Mon 26-Fri 30 Oct: Half Term
Fri 18 Dec: End of Term

Spring Term

Mon 4th Jan: Inset Day
Tues 5 Jan: Term Begins
Mon 15-Fri 19 Feb: Half Term
Fri 26 Mar: End of Term

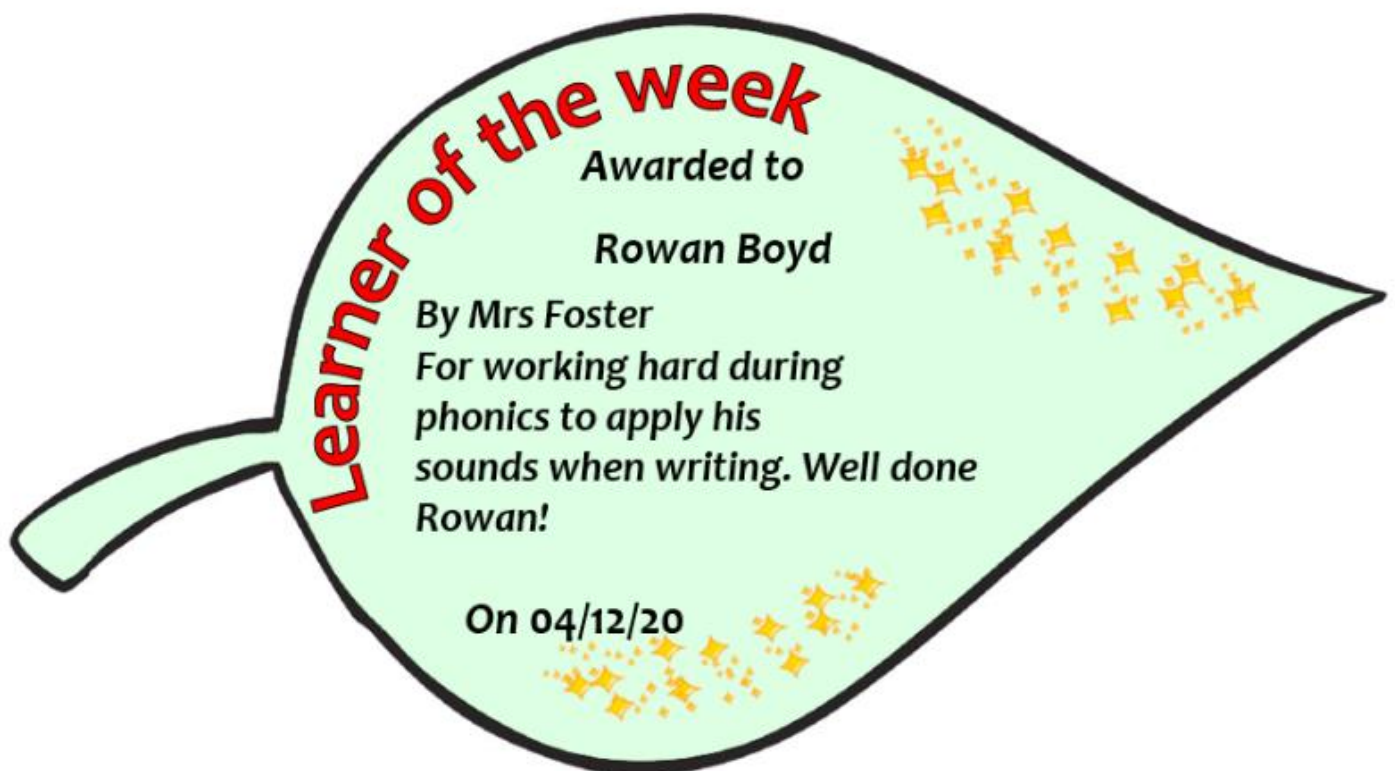
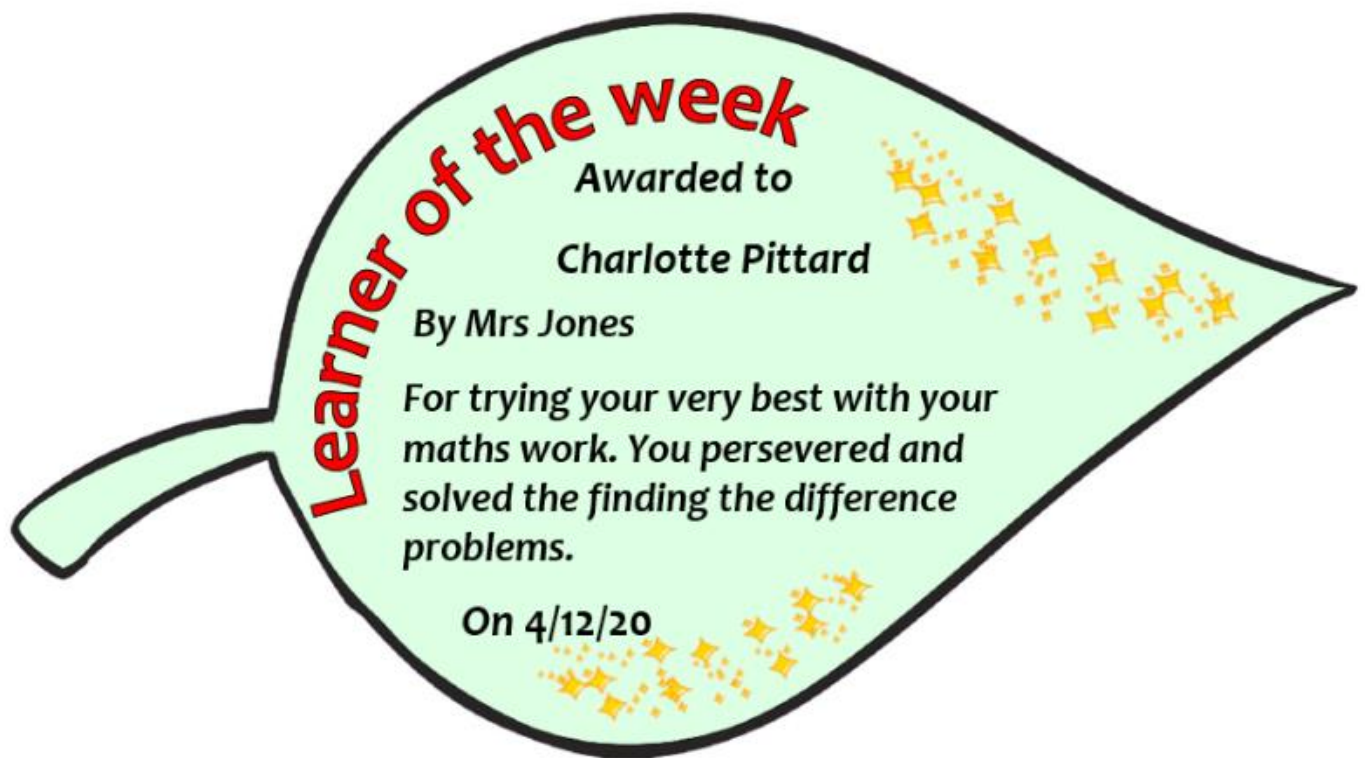
Summer Term

Mon 12 Apr: Inset Day
Tues 13 Apr: Term Begins
Mon 31 May-Fri 4 Jun: Half Term
Mon 7 Jun: Inset Day
Tues 20 Jul: End of Term
Weds 21: Jul Inset Day
Thurs 22 Jul: Occasional Day

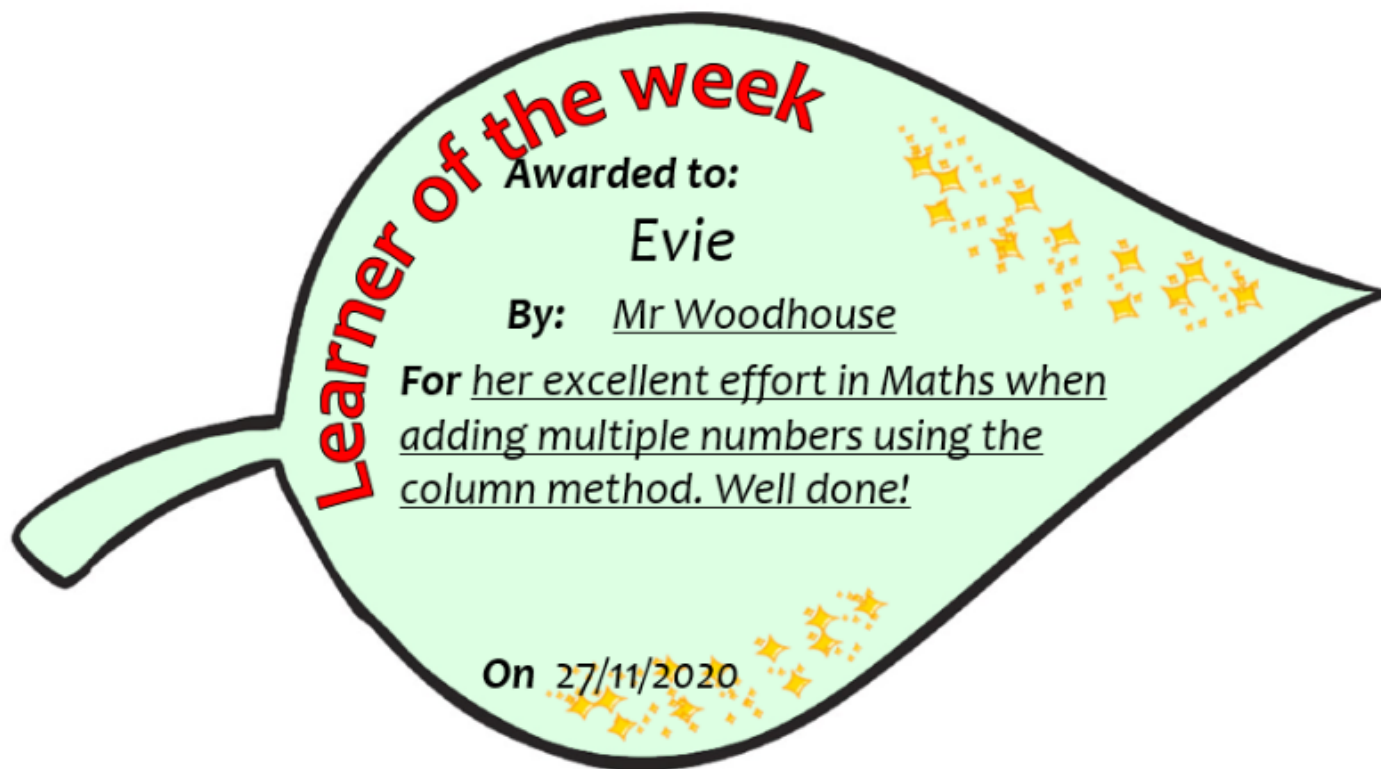
Pantherswood



Homewood



Warrenwood



Harefield

